



Jane Lagassie

ANNOUNCING OUR NEXT ALGONQUIN KNOWLEDGE AND LAND USE STUDY!

ALGONQUIN VALUES AND POTENTIAL IMPACTS OF THE BISSETT CREEK GRAPHITE MINE PROJECT

CONTACT

@ jlagassie@tanakiwin.com

613-401-1301

www.tanakiwin.com

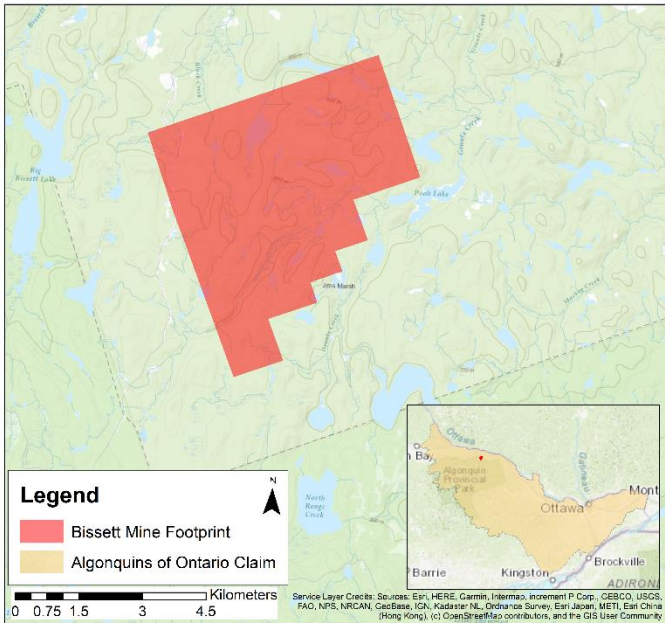
Pembroke, ON



The Algonquins of Ontario (AOO's) lead researcher is Jane Lagassie. We have engaged TEKW Consulting (TEKW) to work with our AOO researcher to design and conduct this study.

DID YOU KNOW

Canada is well positioned to mine and produce essential metals for the renewable energy sector, electric vehicle batteries, and more? The **Bissett Creek Graphite Mine Project** proposed by Northern Graphite Corporation has the potential of generating \$198 million dollars' worth of ore concentrates (ie- graphite), contributing to Canada's economy. However, the project is not without concerns for potential environmental and cultural impacts.



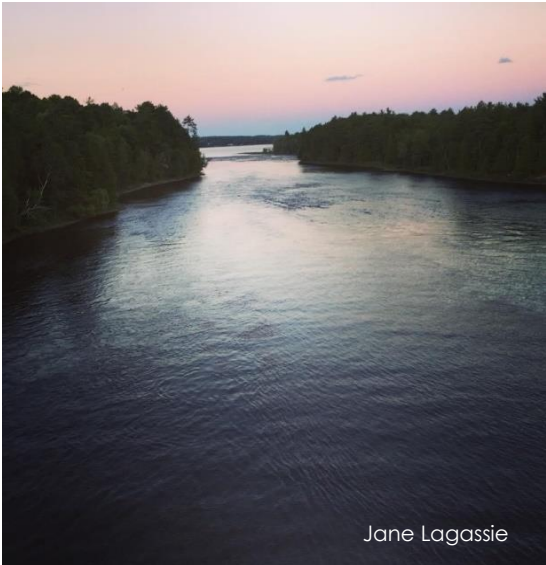
Algonquin peoples have been utilizing the lands and waters and practicing their traditional rights and culture within and around the Bissett Creek Graphite Mine area since time immemorial. Through years of lived experience on the land, Traditional Knowledge (TK) holders have gained



Ethan Huner

the ability to recognize change, drawing on the inextricable link between traditional practices and environmental health.

The history of the Ottawa River watershed is inseparable from the history of the Algonquin people. The Ottawa River (*Kichi Sibi*) is the heartland of the unceded Algonquin Traditional Territory. Water is a vital ecosystem driver and central to the identity of the Algonquin peoples. The health of the Ottawa River watershed needs to be safeguarded to ensure Treaty Rights and the socio-cultural value of the watershed are protected for current and future generations. Headwaters of Grant's Creek and Bissett Creek, both tributaries to the Ottawa River, originate in the proposed mine area.



Jane Lagassie

HOW YOU CAN GET INVOLVED!

Guided by the Algonquins of Ontario (AOO) and its member communities, the Algonquin Knowledge and Land Use Study (AKLUS) will be synthesized from willing participant's interviews and mapping exercises. The aim of this study will be to identify cultural land-use practices and significant sites in order to predict potential future impacts in the environment and Algonquin socio-cultural rights and practices. The AKLUS will also include the development of mitigation measures to be recommended to the mining company to address community members' concerns with the mining project. As we are in the process of setting up kick off and consultation meetings, we are looking for your participation! If this is of interest to you, please contact us!



(Traditional, Ecological, Knowledge & Wisdom)TEKW Consulting is a small family-owned and operated business that acknowledges its privilege for existing on unceded Algonquin territory in eastern Ontario (Chesterville, ON). At TEKW, we recognize those who live, work and play on this land, and we honour and celebrate this territory.



Stephen Hunter