

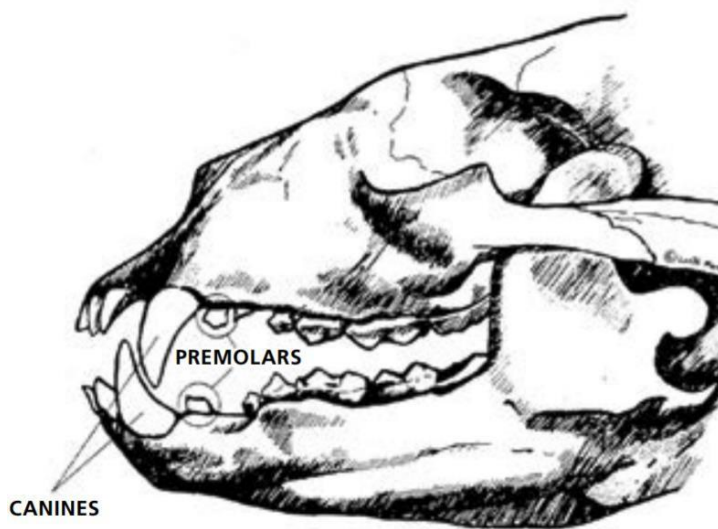
# Hunters: You Can Contribute to Ontario's Understanding of the Bear Population

Submit both premolar teeth from each black bear you harvest to provide vital data used by Ontario to make sustainable population management decisions.

## Ontario needs your help

Successful black bear hunters can assist the Ministry of Natural Resources and Forestry (MNRF) to determine the age structure of local bear populations. This information provides data to assist the ministry to sustainably manage the species.

## How to extract and send us teeth



Both premolar teeth should be extracted shortly after the animal has been harvested, while the jaw is still pliable.

The first premolar is a small, single-rooted, peg-like tooth located just behind the canines, on the top and bottom jaws.

To remove the tooth, push the blade of a knife down along all sides of the tooth between it and the gum.

Gently loosen the tooth by rocking it back and forth using the canine for leverage, then carefully remove the tooth using pliers. Care should be taken when extracting the tooth to ensure the root is not broken.

Please retain a small amount of the flesh around each tooth. Air dry the sample so that it is not wet to the touch and place them in a sealed paper envelope.

**To submit teeth to us:**

Mail the teeth you collect immediately to:

Big Game Harvest Assessment Program,  
Natural Resources Information Section,  
Ministry of Natural Resources and Forestry  
300 Water Street, 2nd Floor, North Tower  
Peterborough, ON, K9J 3C7

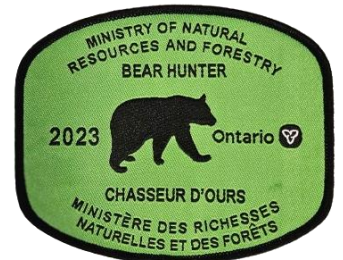
**Your mailing envelope should have:**

Both premolar teeth sealed in a paper envelope and a note with:

1. Your name;
2. Your mailing address;
3. Your Ontario Outdoors Card number;
4. The date the bear was shot;
5. The sex of the bear; and,
6. The Wildlife Management Unit (WMU) number where the bear was shot.

**Ontario Bear Hunter Crest**

In return for your support, an Ontario Bear Hunter Crest will be mailed to the home address you have provided. MNRF will also mail you information about the age of the bear(s) you submitted teeth for, usually within six months of receiving their teeth and information.



**More information**

For more information, please contact the MNRF office in the area you will be hunting, or your black bear hunting service provider.

The annual Ontario Hunting Regulations Summary outlines the rules and regulations for hunting in Ontario and provides information about this program:

[www.ontario.ca/document/ontario-hunting-regulations-summary](http://www.ontario.ca/document/ontario-hunting-regulations-summary)