



Canada Lands Company
Société immobilière du Canada



WATERIDGE | **VILLAGE DES**
VILLAGE | **RIVERAINS**



Algonquins of Ontario

COMMEMORATION PROGRAM: SEEKING ALGONQUIN INPUT!



Please provide your questions or comments no later than **2 p.m. on Friday, June 29, 2018** to your local Algonquin Negotiation Representative or the Algonquins of Ontario Consultation Office at:

31 Riverside Drive, Suite 101
Pembroke, ON K8A 8R6
Tel: 1-855-735-3759 (Toll Free) or
613-735-3759 (Local)
Email: algonquins@tanakiwin.com

www.wateridge.ca
www.clc.ca
www.tanakiwin.com

NAMES ARE SUBJECT TO CHANGE PENDING APPROVAL BY THE CITY OF OTTAWA

CONCEPTS ARE SUBJECT TO CHANGE PENDING APPROVAL BY CLC, THE AOO AND THE CITY OF OTTAWA

OVERVIEW

Wateridge Village / Village des Riverains is a new 310-acre master-planned community developed by Canada Lands Company (CLC) that celebrates both the legacy of the land's history and the brilliance of modern urban design. With its close proximity to the Ottawa River, and its location just minutes from the downtown core, this is undeniably one of Ottawa's most sought-after locations. A wide range of proposed residential product promises a variety of offerings to meet the needs of every major demographic. With its rich heritage aspect, a variety of retail and community amenity offerings, and beautiful parks and green spaces, this visionary community presents an unparalleled opportunity to live, work, learn, and play in one idyllic setting.

CLC has a long-standing practice of honouring the legacy of the sites we develop with commemorative elements such as thematic public art, signage, road names, park names, design of public spaces and rights-of-way, and detailing in street furniture, fixtures, and pavement. Project marketing and branding is also developed with commemoration in mind.

CLC's commemoration program at Wateridge Village / Village des Riverains focuses on the Algonquins of Ontario and the military.

Wateridge Village / Village des Riverains was selected among many names provided to CLC as it instantly describes the natural physical features of the former CFB Rockcliffe site. This site lies on the shore of the Ottawa River, and is home to many natural ridges. The addition of the word 'village' brings the essence of community into perspective. The Rockcliffe community is admired for its unparalleled location, landscape and rich historical background. This logo has been selected by CLC among dozens of logos due to the fact that it visually reinforces the unity of land, water and community at Rockcliffe. These elements are central to both the Algonquin and aviation history of the site.

Military and Aviation

First established by the Department of National Defence (DND) in 1898 for use as a rifle range, RCAF Station Ottawa was formed in the 1920s and became the country's most versatile air station. Over time, the base grew until it totaled over 326 hectares (800 acres) at its peak.

The station has hosted aerial survey and photography, fighter and transport squadrons and flights, a helicopter operational training unit, the RCAF photo establishment, the No. 7 Manning Depot (which provided basic training to women's division members in the second world war), and various other units and facilities over its long history. Following World War II, approximately 600 housing units were built to accommodate the short-term needs of returning military personnel.

The shrinking presence of CFB Rockcliffe began in the 1960s, when the air operational facilities were vacated. Since

1989, the base was reduced in size and occupancy and large portions were transferred from DND to other federal departments and agencies, including the Royal Canadian Mounted Police, the National Research Council, the National Capital Commission, the Canada Aviation Museum, and others. DND's Maritime Helicopter Program, military housing requirements and related support functions located on the Base continued until 2004.

Phase 1 of the redevelopment includes the following commemorative street naming related to the significant aviation and military legacy of the site:

- Croissant Squadron Crescent: Military term
- Place Lysander Place: Historic aircraft
- Cercle Avro Circle: Historic aircraft manufacturer
- Voie du Vedette Way: Historic aircraft

Future phases will include additional commemorative elements such as street naming and parks.

Algonquins of Ontario

The former CFB Rockcliffe site is located in the heart of unceded Algonquin Traditional Territory.

The 2010 Algonquins of Ontario (AOO) and Canada Lands Company CLC Limited entered into an exciting and innovative Participation Agreement for the redevelopment of the Rockcliffe site, following CLC acquisition of the property from the federal government. Specifically, the Participation Agreement provides opportunities for cooperation between the AOO and CLC, including:

- Commemoration of the history and connection of the Algonquin people with the site
- Algonquins of Ontario engagement in all stages of the concept development, land use planning and detailed design
- The opportunity for Algonquins of Ontario to acquire a defined amount of lots or blocks under the municipally-approved plan

Phase 1 of the redevelopment includes the following approved commemorative street naming related to the Algonquin presence:

- Chemin Wanaki Road: Algonquin for 'at peace'
- Chemin Mikinak Road: Algonquin for 'turtle'
- Rue Moses Tennisco Street: Algonquin military veteran

who died in action in the early part of 1917 and was laid to rest in the United Kingdom

- Rue Michael Stoqua Street: Algonquin military veteran who served in WWI for two years before he died in France on April 15, 1917. His mother Jennie Stoqua received two tokens of recognition: a memorial plaque and memorial cross

Future phases will include three Algonquin commemorative parks with the proposed names below:

- Parc Kishkabika Park:, Algonquin word for "rock cliff", as this park is situated at the northern escarpment of the site
- Parc Mieshimin Park: Algonquin for "acorn of white oak", chosen to reference the three mature Bur Oaks in the Park
- Parc Tanakiwin Park (Northeast Woods): Algonquin for "our homeland"

Future phases will have further commemorative street naming.

All proposed street and park names are subject to change pending approval by CLC, the AOO and the City of Ottawa.

This map illustrates the Proposed Commemorative Street and Park Naming

WATERIDGE
VILLAGE



VILLAGE DES
RIVERAINS

PROPOSED COMMEMORATIVE
STREET AND PARK NAMING MAP

PLAN PROPOSÉ POUR LA DÉNOMINATION
DES RUES ET PARCS

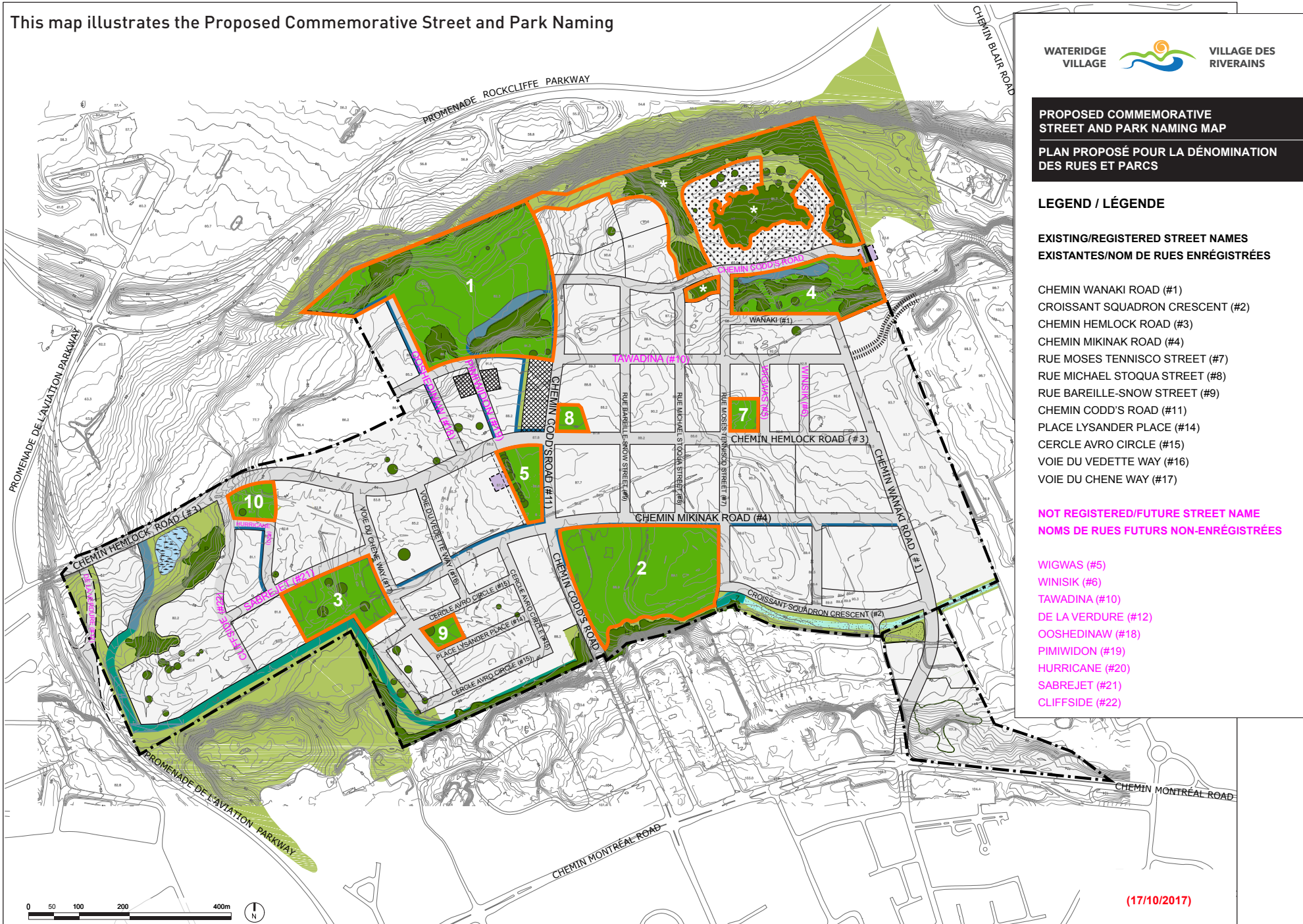
LEGEND / LÉGENDE

EXISTING/REGISTERED STREET NAMES
EXISTANTES/NOM DE RUES ENRÉGISTRÉES

- CHEMIN WANAKI ROAD (#1)
- COISSANT SQUADRON CRESCENT (#2)
- CHEMIN HEMLOCK ROAD (#3)
- CHEMIN MIKINAK ROAD (#4)
- RUE MOSES TENNISCO STREET (#7)
- RUE MICHAEL STOQUA STREET (#8)
- RUE BAREILLE-SNOW STREET (#9)
- CHEMIN CODD'S ROAD (#11)
- PLACE LYSANDER PLACE (#14)
- CERCLE AVRO CIRCLE (#15)
- VOIE DU VEDETTE WAY (#16)
- VOIE DU CHENE WAY (#17)

NOT REGISTERED/FUTURE STREET NAME
NOMS DE RUES FUTURS NON-ENRÉGISTRÉES

- WIGWAS (#5)
- WINISIK (#6)
- TAWADINA (#10)
- DE LA VERDURE (#12)
- OOSHEDINAW (#18)
- PIMIWIDON (#19)
- HURRICANE (#20)
- SABREJET (#21)
- CLIFFSIDE (#22)



(17/10/2017)

- 1 - PARC KISHKABIKA PARK
- 2 - PARC EUGÈNE MARTINEAU PARK
- 3 - PARC MIESHIMIN PARK
- 4 - PARC WING OFFICER WINNIFRED TAYLOR PARK
- 5 - ALLIANCE PARK / PARC DE L'ALLIANCE

- 7 - PARC DES ANCIENS COMBATTANTS / VETERANS' PARK
- 8 - PARC LT. COL. WILLIAM G. BARKER PARK
- 9 - PARC WING OFFICER WILHELMINA WALKER PARK
- 10 - PARC ELSIE MACGILL PARK
- * - PARC TANAKIWIN PARK

ALGONQUIN COMMEMORATIVE PARK CONCEPTS

CLC and the AOO worked together during the following events to explore and understand Algonquin heritage and legacy commemoration opportunities on the Wateridge Village / Village des Riverains site:

- March 23-24, 2011: Elders Circle in Pembroke
- April 12, 2013: Elders Circle in Pembroke
- July 26, 2013: Algonquin Nation Gathering in Bancroft
- September 25-26, 2013: Elders Circle Guided Bus Tour in Ottawa
- March 9, 2015: Talking Circle in Pembroke
- Several AOO/CLC Consultation Working Group Meetings

Lashley + Associates Landscape Architecture were engaged to develop concepts based on what we heard at these events. Together, CLC and the AOO are now seeking input from Algonquin community members on the proposed concepts described in this document.

Once these concepts are approved by the AOO and the City of Ottawa and the parks are built by CLC, they will ultimately be owned and operated by the City of Ottawa.

The plant materials to be used in these parks include a variety of trees, shrubs, and perennials chosen from "The Ethno-Botanical Garden Planting List" provided to CLC by the AOO Consultation Office.



Aerial of Wateridge Village / Villages des Riverains showing locations of parks and proposed gateway entrance features

Plants on this list are native to the area and have been chosen for their Algonquin cultural, spiritual, and educational significance.

These will be incorporated into the designs so that users are able to learn about their historical and present day uses.

Proposed concepts for the three Algonquin commemorative parks and the gateway feature are explained and illustrated in this brochure.



Algonquins of Ontario

TANAKIWIN

Parc TANAKIWIN Park, Algonquin for “our homeland” (formerly known as Northeast Woods)

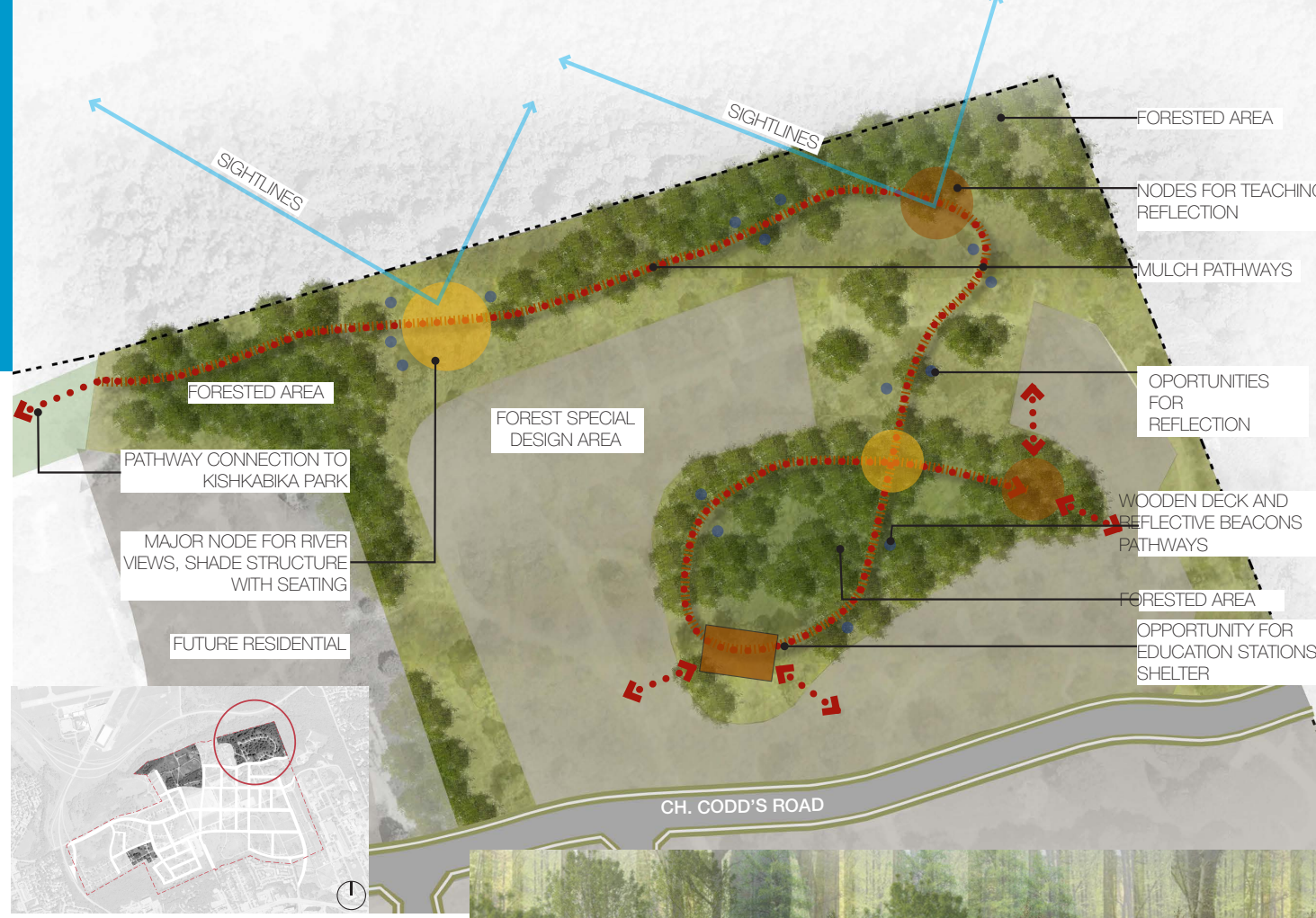
Theme: Nature, Spirituality, Culture, Quiet Contemplation

This concept focuses on the interconnectedness between humans and Mother Earth; provides opportunities for reflection; teaches about indigenous plant material, humans’ roles in nature, and the connections to plants, animals, weather, etc.

Proposed Major Features:

- Creation of a low boardwalk or wood chip trail to encourage users to ‘walk lightly on Mother Earth’ and allow for a guided path through existing vegetation and topography
- Areas for quiet contemplation, reflection, and spiritual connection which include mirrored surfaces for reflection of self and of nature
- Educational opportunities
- Interpretive signage and specific areas for teaching and observation of the natural environment
- Learning circle area
- Sheltered area(s) for gathering (designed with traditional Algonquin building materials and forms)

The Forest Special Design Area is a residential area surrounded by an existing forest and designed to have minimal impact on this forest and the existing water regime it relies upon.



This area will utilize low impact development features such as drainage swales, narrow private roads, and small building footprints to minimize the impact on groundwater levels and the existing tree root systems. Efforts will be made to limit deep excavations to protect root networks and new buildings will be encouraged to incorporate rooftop rainwater collection and reuse systems as groundwater recharge elements.



KISHKABIKA

Parc KISHKABIKA Park, Algonquin for “rock cliff” (formerly known as Central Ridge)

Theme: Algonquin Presence in the Ottawa Valley, Outreach and Education

This concept focuses on the creation of a direct connection to the water, which represents lifeblood, source of food, trade, transportation and gathering. Algonquin commemoration elements will be incorporated throughout the park (e.g. use of significant indigenous plant species, representations of the canoe and indigenous animals such as eels, otters, beavers).

Proposed Major Features:

- A bridge or look-out platform will span the waterfall channel and provide a sense of being on the water, create a visual connection to the Ottawa River and a physical landmark when viewed from outside of the site
- A prominent shade structure with Algonquin guided design will provide a sheltered look-out
- An amphitheater/teaching circle will provide a space for performance and education, and potential for representation of the medicine wheel, dream catcher, turtle, and/or wigwam
- Open space designed with significant preservation of existing trees and vegetation to provide areas for formal and informal gatherings, dancing, ceremonies, picnics, etc.



MIESHIMIN

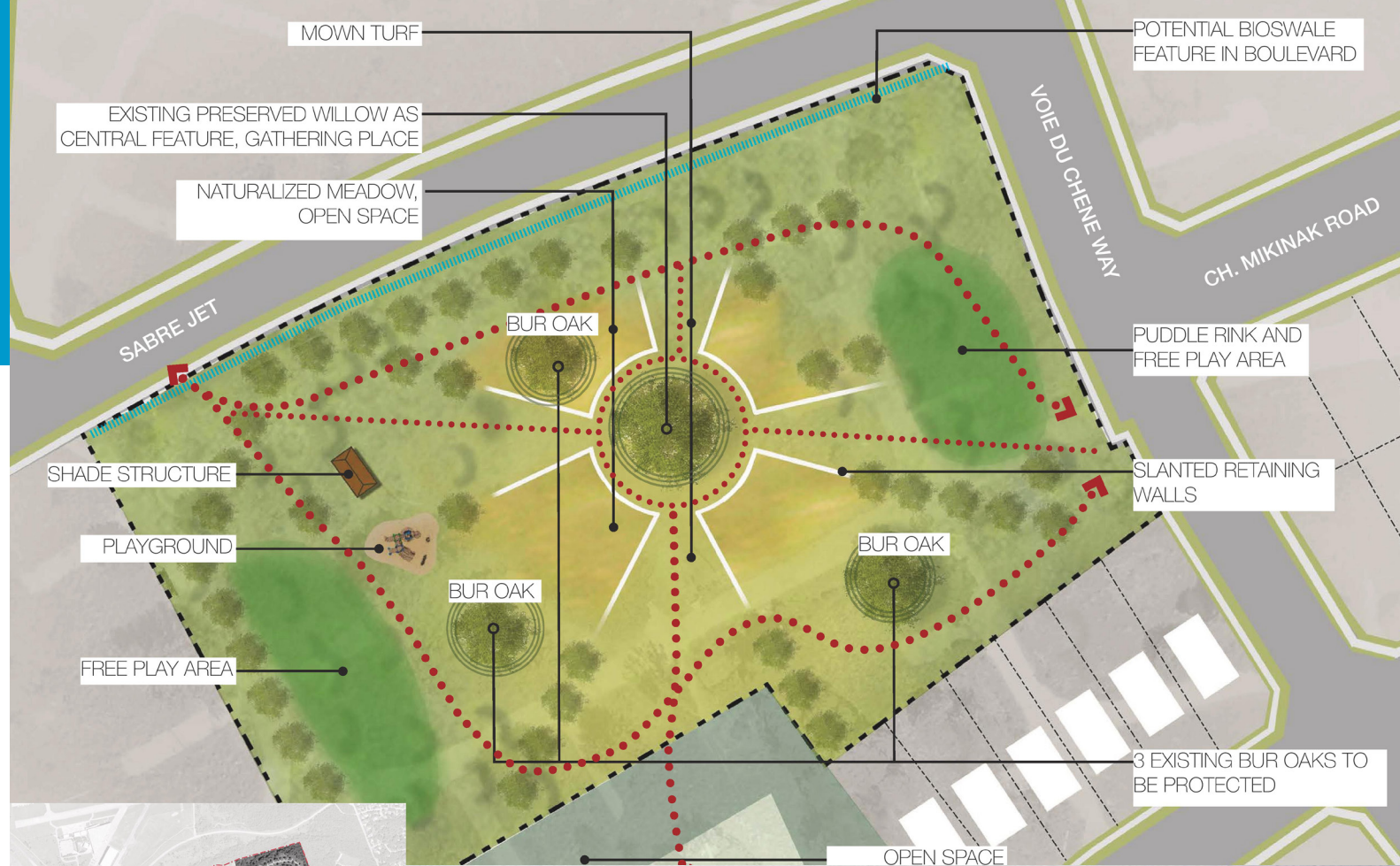
Parc MIESHIMIN Park, Algonquin for "acorn of white oak" (formerly known as Bur Oak Park)

Theme: Nature in Daily Algonquin Life/ Culture

This concept focuses on providing an area for the public to experience nature and learn about its importance to the Algonquin people in their daily life and culture. The primary objective is to preserve and highlight the sensitive existing mature Bur Oaks and Willow by creating a simple, natural environment for people to experience the spiritual presence of the trees, surrounded by natural meadow areas.

Proposed Major Features:

- Low slanted walls in a layout that can represent the medicine wheel, cardinal directions, or the dream catcher to subtly guide users to the central gathering area featuring the preserved Willow, a significant species in Algonquin culture for food, medicinal use, building material, weaving, and ceremonies. The walls create a canvas for interpretation and art to provide education about the natural features including the significance of the existing trees, meadow species (indigenous and ethno-botanical varieties) and the relation of plants to culture, society, economy and health
- Quiet contemplation areas and gathering spaces with incorporated seating and interpretive signage



GATEWAYS

Given the site's history as both traditional Algonquin territory and a former military base as well as its future as a new community, the objective of the gateway entrance feature is to provide a subtle depiction of the site's heritage and direction of the redevelopment. This concept also incorporates materials and forms that signal arrival into the site and blend both Algonquin and military commemoration.

The features will be designed using materials that were prevalent throughout the different generations and inhabitants of the site:

- Wood – traditional building material, forests
- Metal – modern building material, military equipment/machinery
- Stone – traditional foundation material, escarpment material

The circles will define the shape of the feature and act as a symbol of coming together and inclusion, providing a meeting place at the entrance of the site, and evoke the feeling of coming home. The circle has a strong Algonquin meaning as the shape of the medicine wheel and wigwam. The concentric circles also represent the military RCAF insignia.

The posts will represent framing, a staple of building in all cultures and generations, including the framing of the traditional Algonquin wigwam, of military hangars, and of new homes being built, thus unifying all generations. Near the



posts, areas within the circle will feature native plant species which are culturally significant to Algonquin people for food, medicine and ceremony. The combination of the circle form on the ground and the posts extending up the sides will also create a welcoming sense of entry.

The regimented plantings and bollards represent soldiers' military structure and the biplane wing strongly symbolizes the site's significance regarding aviation.

Horizontal concert walls could be used for artwork, logos, etc. An etching of the Ottawa River landscape is shown in the concept to highlight the site's proximity to the Ottawa River, as well as the river's historical significance to the Algonquins.

